

ESA620 BRAZ230V Power Adapter

Instruction Sheet

Introduction

⚠️⚠️ Warning

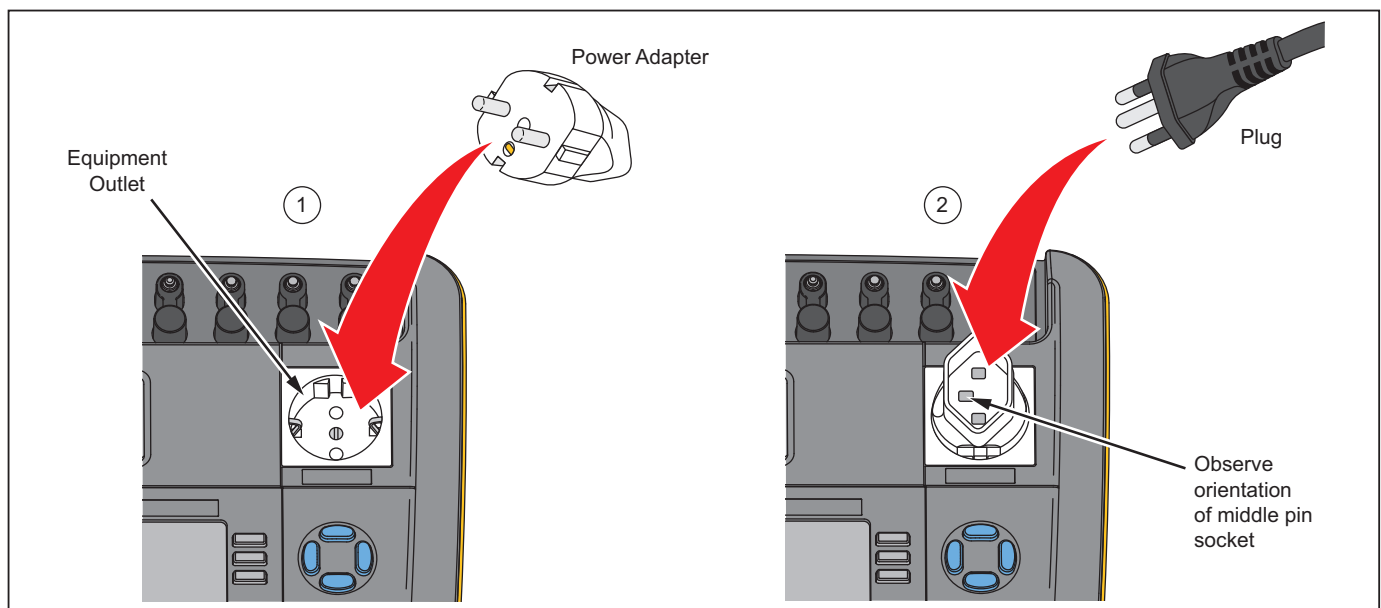
To prevent possible electrical shock, fire, or personal injury:

- Use the Product only as specified, or the protection supplied by the Product can be compromised.
- Limit operation to the specified measurement category, voltage, or amperage ratings.
- Carefully read all instructions.
- Do not use the Product around explosive gas, vapor, or in damp or wet environments.
- Do not use and disable the Product if it is damaged.
- Do not use the Product if it operates incorrectly.

- Read all safety information before you use the Product.
- Examine the case before you use the Product. Look for cracks or missing plastic. Carefully look at the insulation around the terminals.
- Do not operate the Product with covers removed or the case open. Hazardous voltage exposure is possible. Remove the input signals before you clean the Product.
- Use only specified replacement parts.
- Have an approved technician repair the Product.

Instructions

Put the power adapter into the equipment outlet with the orientation shown in the figure below.



hho001.eps