

Manual Supplement

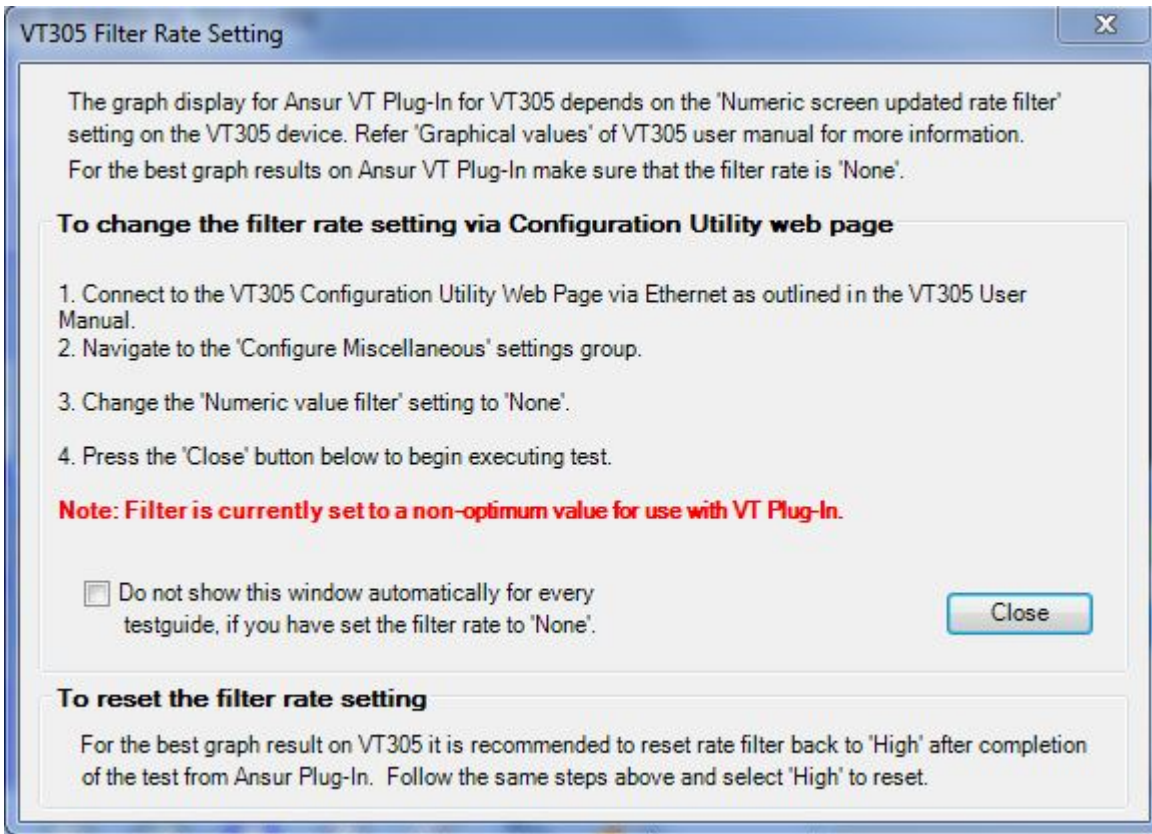
Manual Title:	Ansuri VT Users	Supplement Issue:	1
Part Number:	FBC-0016	Issue Date:	1/18
Print Date:	November 2011	Page Count:	2
Revision/Date:	2, 2/13		

This supplement contains information necessary to ensure the accuracy of the above manual.

Change #1, 517

On page 3-6, replace the first paragraph and Figure 3-6 with:

If the VT305 Analyzer is connected to the Plug-In, the window below shows on the display. If necessary, set the "Numeric value filter" to 'None'.



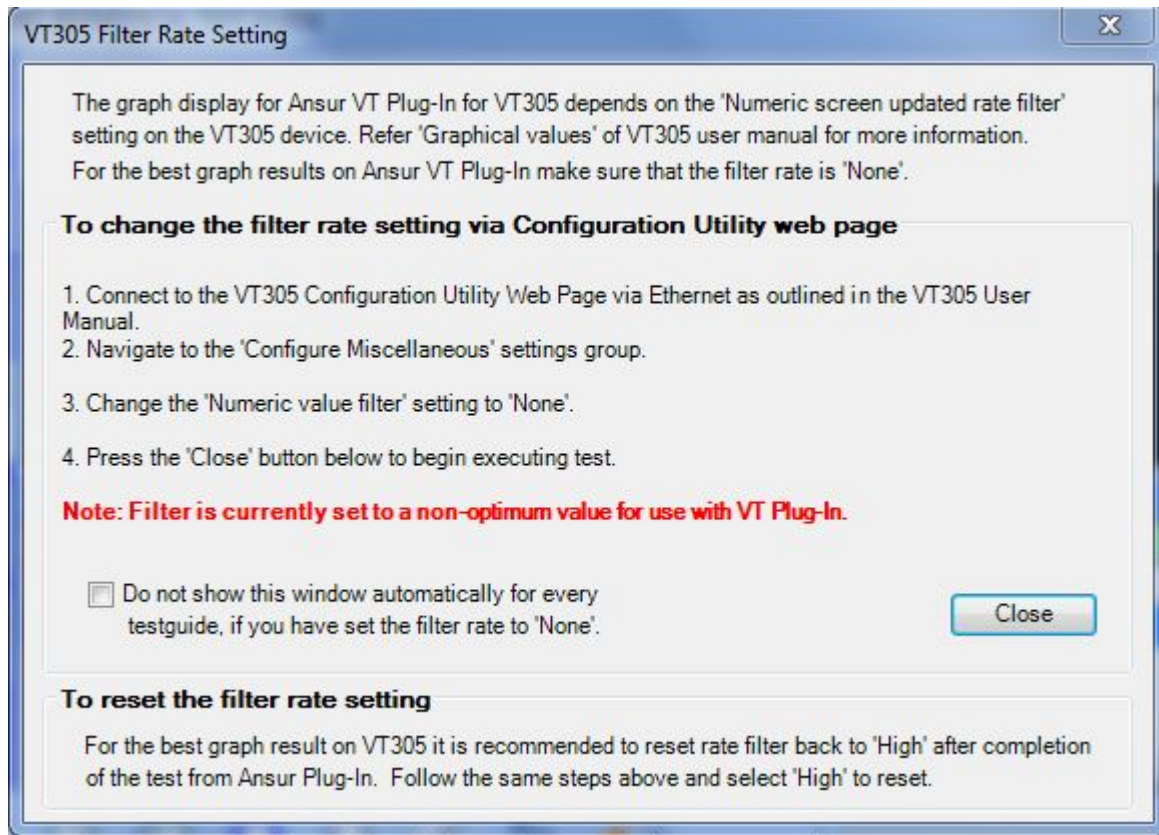
gig73.bmp

Figure 3-6. VT305 Filter Rate Setting Wiindow

On page 4-7, replace the first sentence under Figure 4-7 with:

Notification of Improper Filter Rate

Replace page 4-8, with:



gig73.bmp

Figure 4-8. VT305 Filter Rate Setting Window

Set the filter rate on the Analyzer to **None** for the best graph results from the Plug-In.

Note

See VT305 Users Manual to learn more about the VT305 filter rate settings.

Use the Configuration Tool to set the VT305 filter rate. See *VT305 Users Manual*.

On page 4-9 remove Figure 4-9.